

XC-5000

Automated Sampling Console



**Automated
XC-5000 Console
with Laptop
& Software**

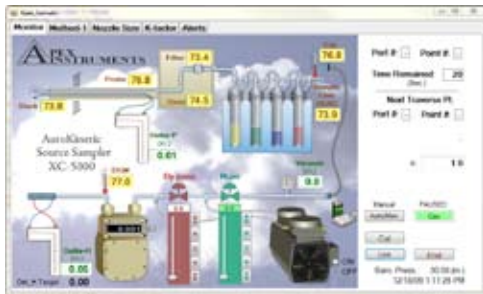
Wireless or Ethernet
Connection Available

XC-5000 Automated Isokinetic Sampling Console

The Apex Instruments XC-5000 Isokinetic Source Sampler is designed for conducting US EPA Method 5 and associated isokinetic methods. Take the worry out of isokinetic calculations and the human error out of data entries recorded by hand. The new XC-5000 is compatible with your existing Method 5 stack sampling components. Report preparation is streamlined with accurate data downloadable to files for easy preparation and submission to your regulating agency.

Features

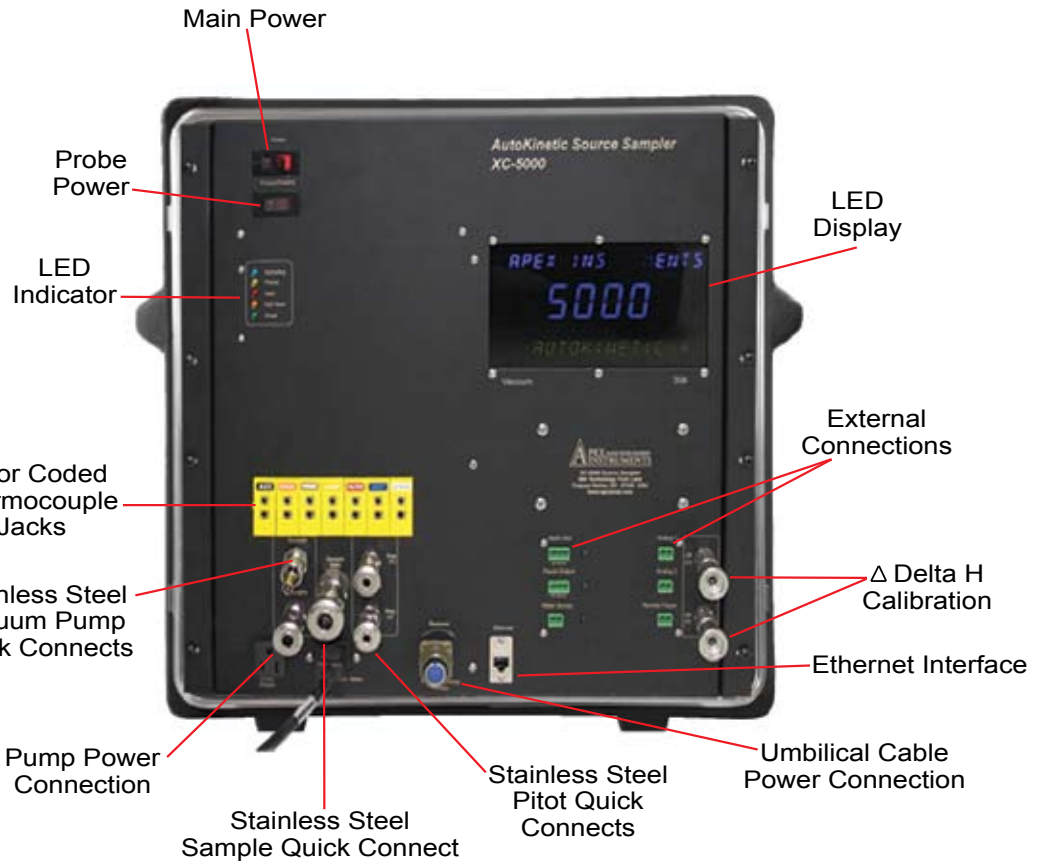
- Uses Standard Apex Instruments Sample Train Components (Probe, Nozzle, Heated Filter Box, Impinger Box)
- Calculates Stack traverse Points (Method 1)
- Stores and Displays User Entered Data and Parameters
- Performs Instantaneous Isokinetic Sample Flow Calculations & Controls Isokinetic Flow
- Timer Alerts Operator to Move the Probe
- English or Metric Units



XC-5000 software screen shot.



Wireless or Ethernet Connection Available



Specifications

Gas Meter: Integrated, Precision DGM, 0.7 liters per revolution, digital gas volume with Internal Quadrature Encoder with 6 digit LCD display, 1cc resolution.

Temperature Control: Integrated temperature control via the Control and Data Acquisition Board, probe and oven with solid state relays.

Thermocouple Display: 7 temperatures displayed simultaneously on the PC User Interface, °F or °C, Probe, Stack, Oven, Filter, Exit, AUX and DGM.

Digital Pressure Transducers for ΔH and ΔP Bi-Directional, Barometric.

ΔP +/- 2.5"	0.01" resolution
+/- 63mm	0.01 mm resolution

ΔH 0"-5"	0.01" resolutions
0mm-127mm	0.01mm resolution

Barometric	17.7 inHg – 32.5 inHg	0.01 inHg resolution
	450 mmHg – 825 mmHg	0.01m mmHg resolution

Optional:
4 channel analog input module for logging external data (4-20ma, 0-10V, 1-5V).

Dimensions:
23" x 21" x 12" (58 cm x 53 cm x 30.5 cm).

Weight: 39 lbs. (17.7 kg).

Power: 120V / 60 Hz. 220V / 50 Hz (optional).

Console Power Requirements:
120V 15amp max.

Umbilical Connections:

Electrical: 4 conductor circular connector grounded shell.
Sample line: Stainless Steel 1/2" Quick Connector.
Pitot Line: Stainless Steel 1/4" Quick Connectors (optional 3/8").
External pump: Stainless Steel 3/8" Quick Connect.
Thermocouples: Type-K standard size.

Communication:
Wireless and Ethernet.